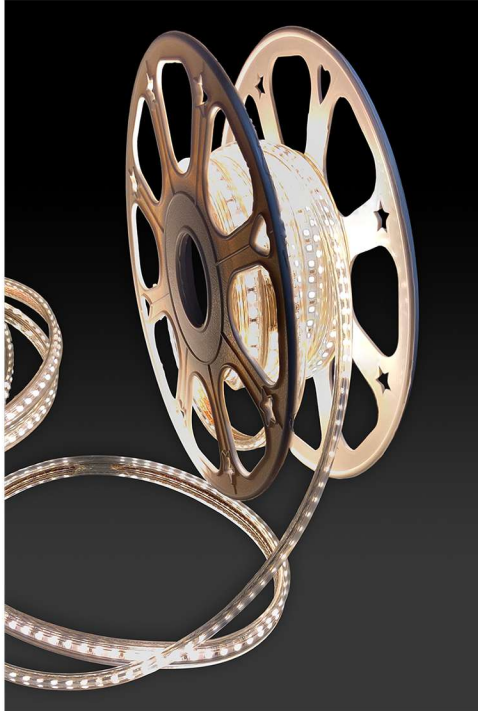


FUTURA LIGHTING

Futura ETL Approved 120V Line Voltage Flexible Ribbon Led Strip Special (Waterproof)

Product Name: ETL-120V-XX-SP (Every 1/2" Cut)



Features:

Input Voltage: 120V/AC

Working Frequency: 50hz-60hz

LED Type: 2835SMD

LED Power: 0.2W each

LED Qty: 120 LED's per meter

LM / LED: 26-28lm each LED

Power per meter: 14.4W per meter

Lumens per meter: 900-1080lm/meter

Lifespan: >30,000 hours

Colors Available: 2700K, 3000K, 4000K, 5000K

PCB: White color 8MM PCB

Type Size: 7*14mm

Lens Angle: 120°

Cutting: Every 1/2"

Maximum Connection Length: 120V - can support a max of 50 meters with one power cord

IP Rate: IP67

Packaging: 50 meters per roll

Certificate: ETL



Reference Numbers:

Model No.	Light Color	Color Temp.	Lumens (lm/m)
ETL-120V-WW-SP-27	Warm White	2700K	900 lm/m
ETL-120V-WW-SP	Warm White	3000K	960 lm/m
ETL-120V-NW-SP	Neutral White	4000K	1000 lm/m
ETL-120V-W-SP	Cool White	5000K	1080 lm/m



1



2



3



4



5

Ribbon Accessories:

1. FL-STRIP-120V-CORN 2: 120V Single Color Corner Connector
2. FL-STRIP-120V-PCORD: 120V Single Color Power Cord with Plug and Rectifier
3. FL-STRIP-120V-CONN 2: 120V Single Color Ribbon to Ribbon Connector
4. FL-STRIP-120V-END 2: 120V Single Color End Cap
5. FL-STRIP-120V-CLIP: 120V Clip for Single Color

Same Accessories Can Be Used for ETL or Regular 120V Strip